



Build GREEN the future is NOW!

LRC  
inside





# LRC TECHNOLOGY

LRC Inside represent revolutionary technology and processes that transform recycled material into green product for building construction. It is called Lightweight Reinforced Concrete (LRC). LRC has been widely applied for precast architectural elements such as window coping, cornices, wall panel and lightweight concrete block in Malaysia. The latest product produced via the LRC technology is the EKO-BLOCK & EKO-PANEL for IBS wall solution as well as Green Building Development.









## ECO-FRIENDLY PRODUCTS

Newspaper Waste



Polystyrene Waste



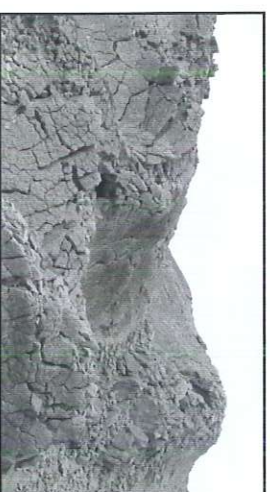
Coal Waste



Cellulose Fiber



Polystyrene Powder



Fly Ash



# FEATURES



Green Product



Thermal  
Insulation



Low Water  
Absorption



4 Hours  
Fire Rated



Lightweight



Cost Efficiency



Speedy Production  
Cycle



Reduce 50%  
Transportation Cost



Easy  
Installation

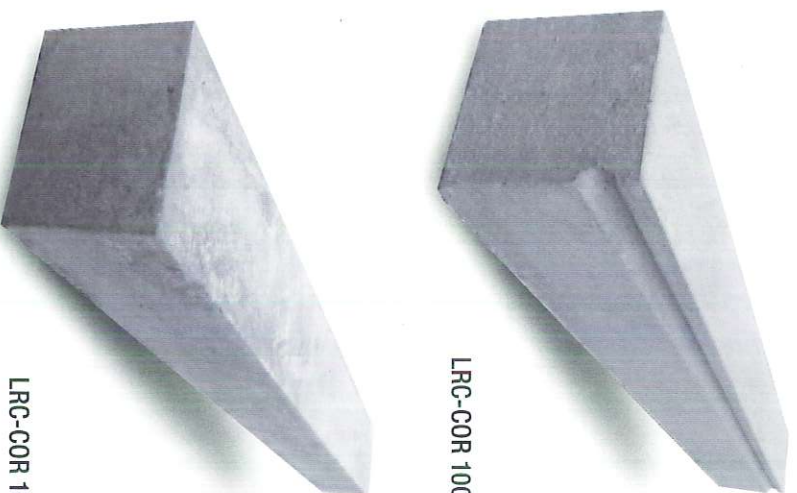


Strength & Safety





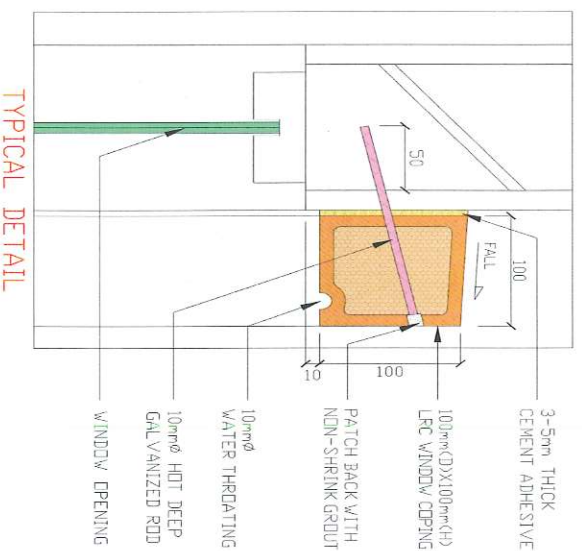
## Sustainable Architectural Green Product



LRC-COR 1001

LRC-COR 1002

## METHOD OF INSTALLATION



## TYPICAL PROPERTIES

PROPERTY	VALUE
Dimension	100x100x1000mm
Shear Strength	1.5 - 2.5 Mpa
Compressive Strength	8 - 10 Mpa
Impact Strength	5 - 10 kJ/m <sup>2</sup>
Elastic Modules	10 - 20 Gpa
Dry Density	1300 - 1500kg/m <sup>3</sup>
Fire Resistance	3 hours
Water Absorption	0.002ml/m <sup>2</sup> /sec
M.O.R	15 Mpa
Freeze Thaw (50 cycles)	No deterioration





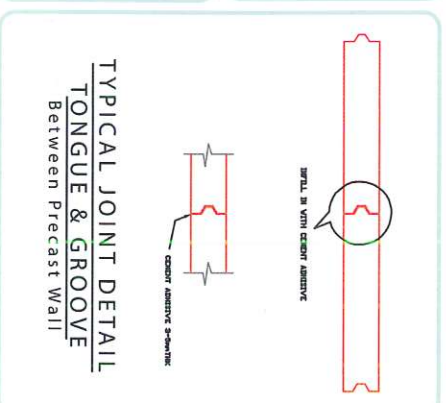
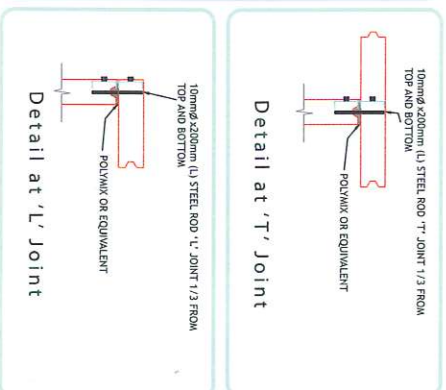
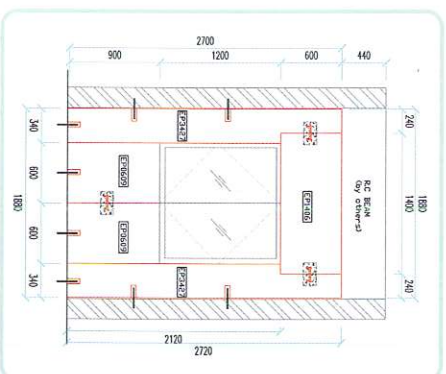
# LRC EKO-PANEL Sustainable Wall Solution IBS Product



## TYPICAL PROPERTIES

PROPERTY	VALUE
Dimension	100x600x3000mm 125x600x3000mm
Length's tolerance	+ / - 5mm
Width tolerance	+ / - 2mm
Diagonal Strength	+ / - 2mm
Weight	-100mm thick + / - kg/m <sup>2</sup> -125mm thick + / - kg/m <sup>2</sup>
Dry Density	1000 - 1200kg
Compressive Strength	5 Mpa
Thermal Resistance (m <sup>2</sup> ) BS 674: Part 2: 1986	0.28 m <sup>2</sup> K / w
Resistance to continuous heating	70°C
Surface Alkalinity	pH 7 - 10
Fire rated partition	130 minutes BS 476: Part 22
Water Absorption	<10% Test of 24 hours
Installation Speed	30 m <sup>2</sup> / day
Anchorage load	100 kg
Sound Insulation - 100mm thick - 125mm thick	40 dB 45 dB

## METHOD OF INSTALLATION

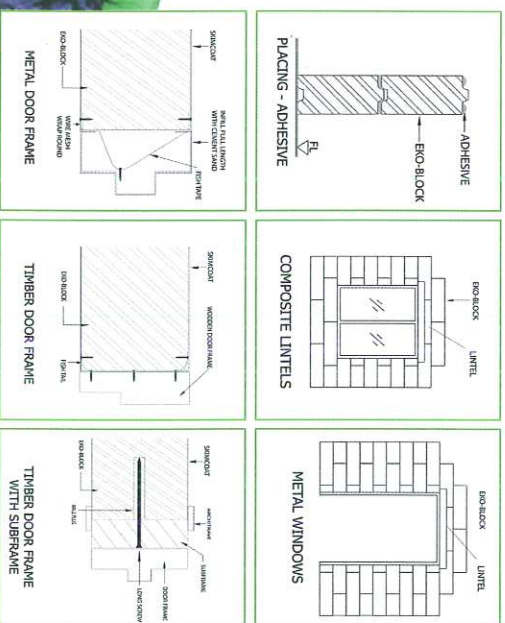




# LRC EkoBlock Wall Solution IBS Product

- For external & internal wall
- Clean, neat & safety at site
- Low wastage
- Fast & easy installation
- Speedy construction
- Finishing in skim coat and cement render
- Excellent sound & thermal insulation
- Extremely fire resistant
- Low water absorption
- Cost saving

## METHOD OF INSTALLATION



## TYPICAL PROPERTIES

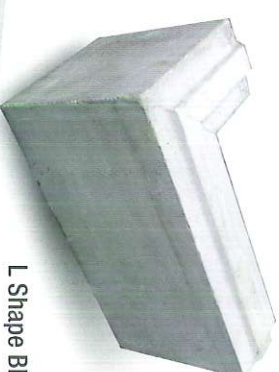
PROPERTY	VALUE
Dimension	100x208x600mm 125x208x600mm
Bending	2 - 4 Mpa
Shear Strength	1.5 - 2.5 Mpa
Compressive Strength	3 - 5 Mpa
Impact Strength	5 - 10 kJ/m <sup>2</sup>
Elastic Modules	10 - 20 Gpa
Thermal Resistance(m <sup>2</sup> )	0.3m <sup>2</sup> K/W
Dry Density	900 - 1000kg/m <sup>3</sup>
Weight	11.5kg - 12.5kg
Fire Resistance	100mm - 2 hours 125mm - 4 hours
Water Absorption	31.1 g/m <sup>2</sup> sec <sup>0.5</sup>
Freeze Thaw (50 cycles)	No deterioration



Tongue & Groove  
Design Block



T Shape Block



L Shape Block



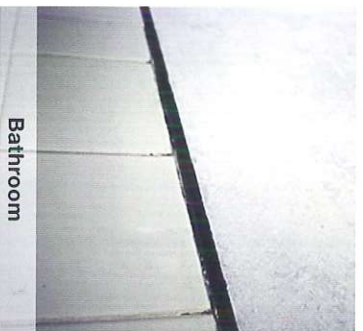


# UTILIZATION

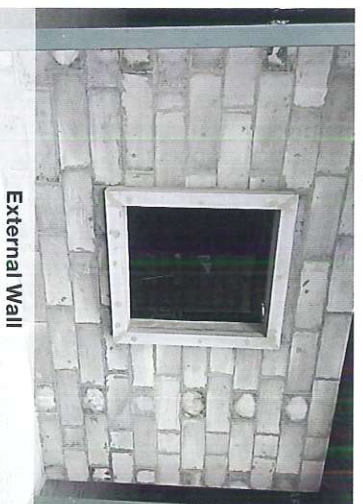
## External, Internal & Wet Area Wall



Internal Wall



Bathroom



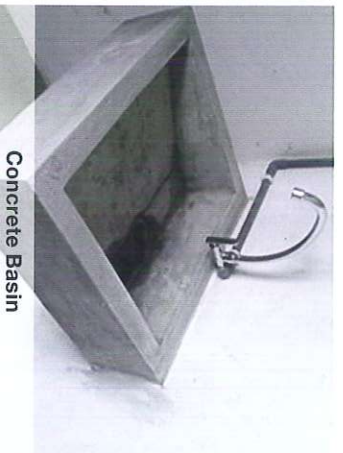
External Wall



Conceal Wiring



Metal Door Frame



Concrete Basin



DB Box



Compressor Bracket



# LRC PRODUCTS RANGE

Sustainable Architectural Green Product

## DECORATIVE



Panel



Column Cladding



Planter

## OTHERS PRODUCT



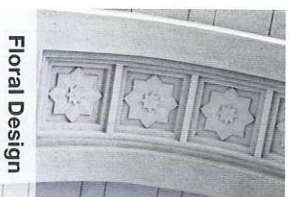
Wheel Stopper



Vertical Fin



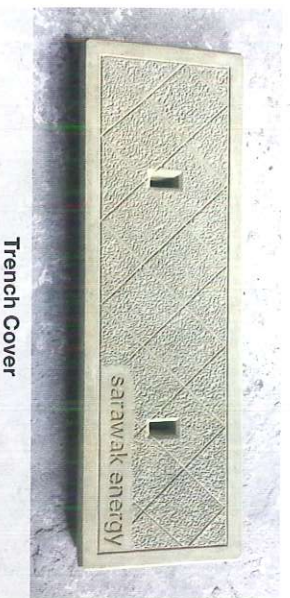
Balustrade



Floral Design



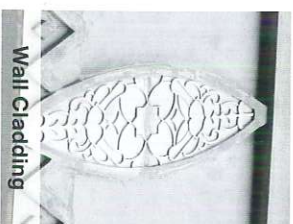
Sculpture



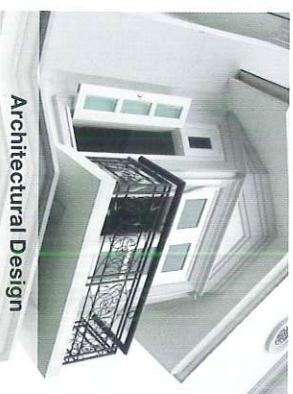
Trench Cover



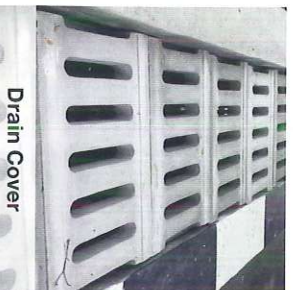
Gazebo



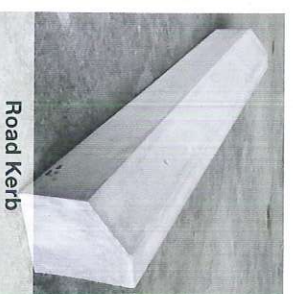
Wall Cladding



Architectural Design



Drain Cover

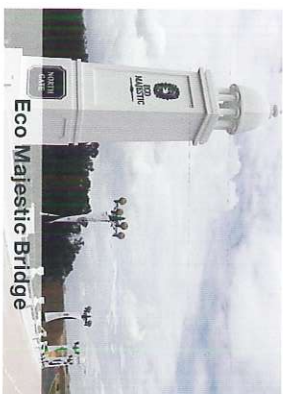


Road Kerb





# COMPLETED PROJECTS



Eco Majestic Bridge



Istana Negara



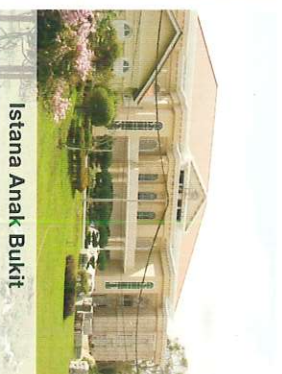
Sunway Lagoon & Resort Hotel



Masjid Istana Alam Shah



Istana Putrajaya



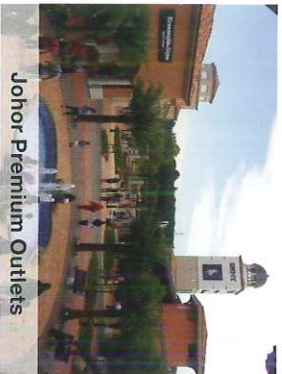
Istana Anak Bukit



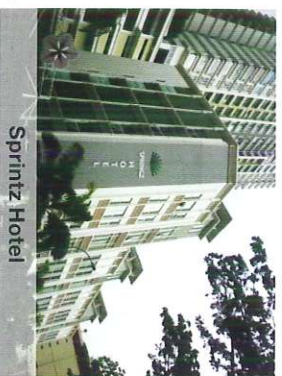
Tanjong Pagar Istana Alam Shah



Uitm Puncak Alam



Johor Premium Outlets



Sprintz Hotel



Arkib Negara



Sayang Bridge



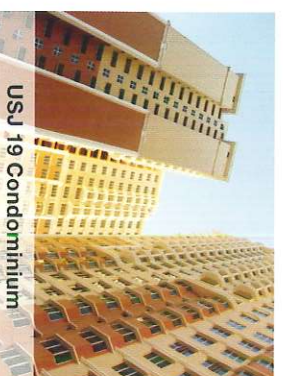
Segi College



Bungalow Unit



Taiping Polis Headquarter



USJ 19 Condominium



SP Setia HQ



Matrix International School





#### Factory

**CSL TECHNOLOGIES (M) SDN BHD** (429166-A)

Lot 7705, Jalan Kuari Sungai Long,  
43100 Hulu Langat,  
Selangor Darul Ehsan,  
Malaysia.

**Tel** 012 -657 0113

**Email** [lrcinside@lrc.com.my](mailto:lrcinside@lrc.com.my)  
[marketing@lrc.com.my](mailto:marketing@lrc.com.my)

**WWW.LRC.COM.MY**

 [www.facebook.com/lrcinside](https://www.facebook.com/lrcinside)

